



ERA Installation Process for New Curriculum

BS-CIT | BS-CLS | BS-CSS

Version – 1.0



**कुशल
युवा
कार्यक्रम**

ERA - 2018

Steps to Install New ERA (Activation)	3
Downloading the Content and set the path for Content –	11
A. Download Content	11
B. Set Path - How to set content path?	13
To view Learner Details/Login Credentials for accessing ERA	15
Steps to install new ERA Explorer: (Let’s Start with learning by using ERA Explorer)	17
Upload Data	25

ERA Installation Process: Preparation for OnCeT (Process and Proficiency test)

All KYP SDCs have 1 Server and 21 Clients machines (Desktop/Laptop) in their lab. SDC is expected to install new ERA on any of **Client machine** (no outside machine is allowed or do not install it on Server machine). Please note that this client machines must have following things installed:

1. Operating System: Windows-10 (64-bit OS)
2. Google Chrome latest version (Use Google Chrome Only)
3. Stable Internet Connection
4. Antivirus
5. Headphone mic

Use your Solar Id and Password to activate

Ensure system date and time is properly set. (Time zone should be +5:30)

Welcome to the world of ERA - <http://erablog.mkcl.org/tag/features/>

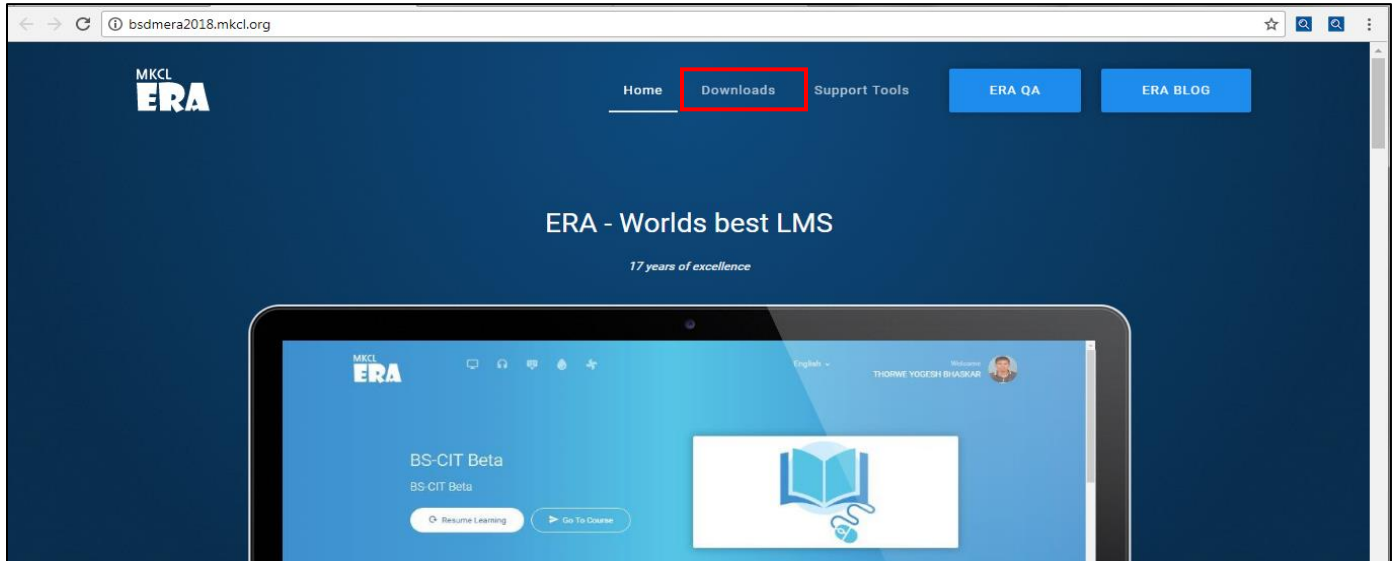
Download below setup before starting the actual process

- 1 Download the following two applications from the link : <http://bsdmera2018.mkcl.org/>
 - ERA 2018 Framework Setup
 - ERA Explorer (ERA Secured Browser)
- 2 Download content required for “BSDM welcome course” from below link :
 - BS-CIT Course Link:-
http://filesver.mkcl.org/centerdownload2/BS-CIT_Welcome_content.zip
 - BS-CLS Course Link:-
http://filesver.mkcl.org/centerdownload2/Welcome_Course_content_BS-CLS.zip (395MB)
 - BS-CSS Course Link:-
http://filesver.mkcl.org/centerdownload2/Welcome_Course_content_BS-CSS.zip (405 MB)

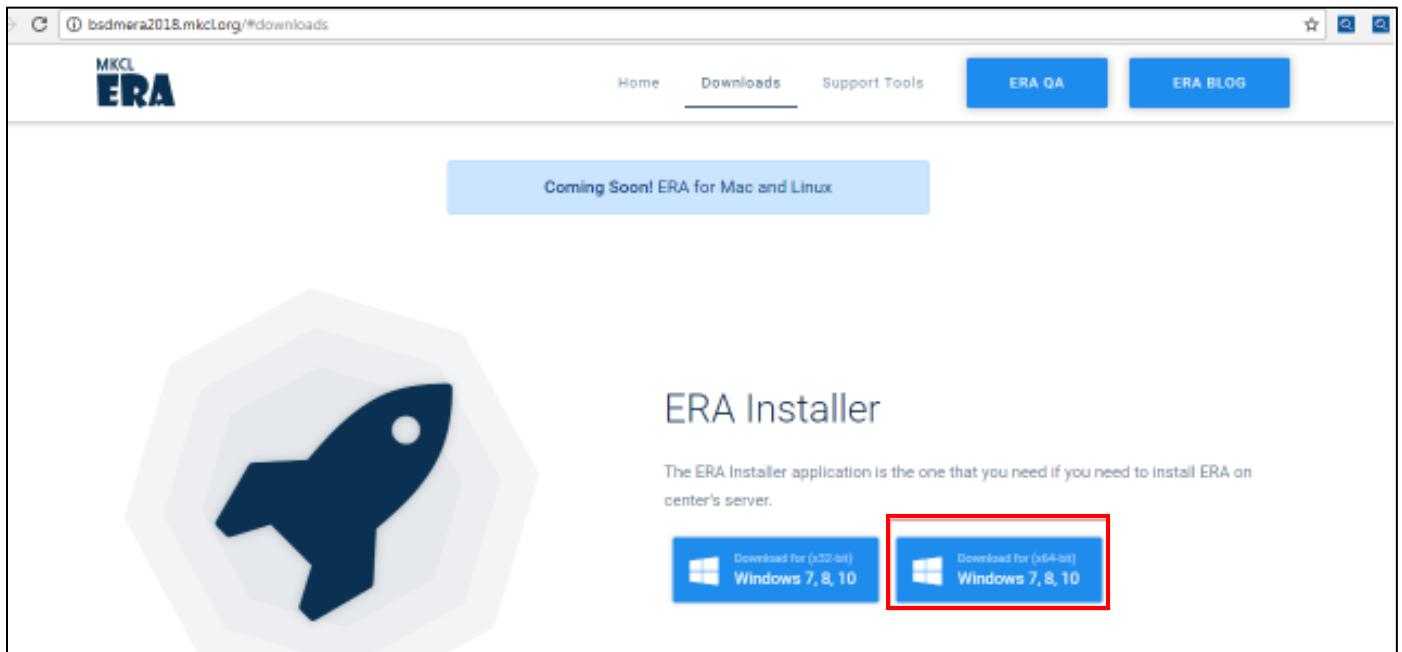
Note: - Course content can be downloaded by using the above mentioned link. Course Content needed to be downloaded and content path to be given to the only single course and if want to view another course then content path need to be set as accordingly. Direction to set the content path is mentioned below.

Steps to Install New ERA (Activation)

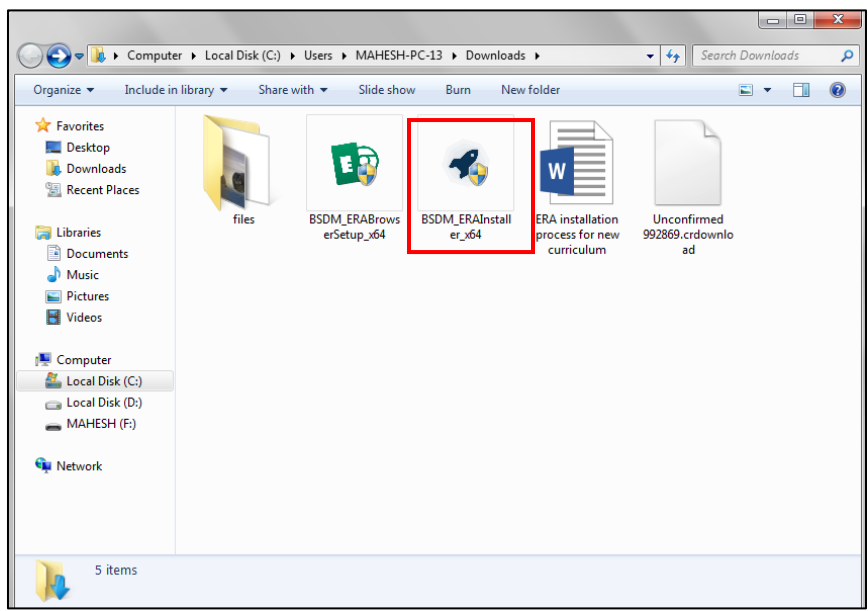
1. Open Chrome and use the given URL for downloading ERA - <http://bsdmera2018.mkcl.org/>



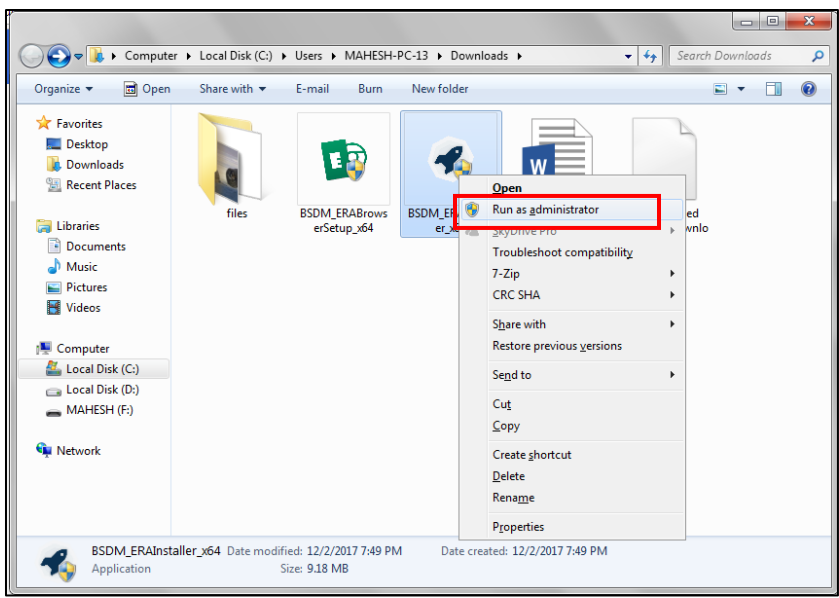
2. Go-to Downloads tab and select ERA Installer for 64-bit

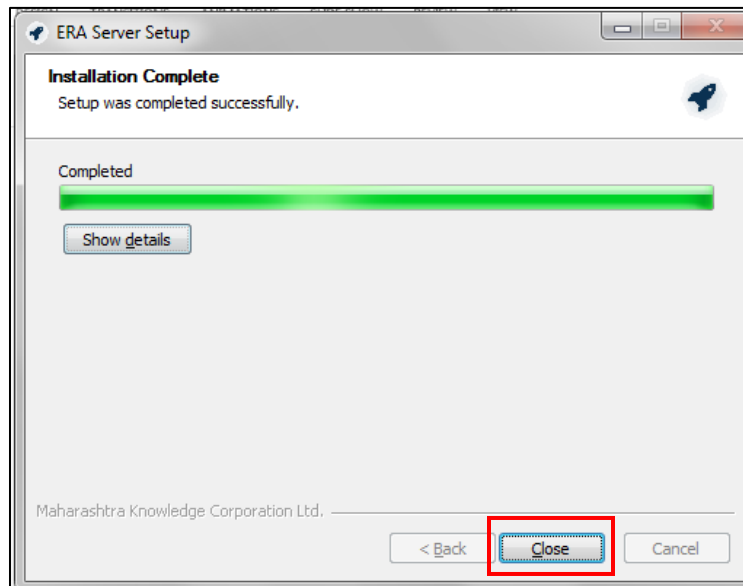


3. Go to Downloads >> Intsall “ERA Framework Installer” setup

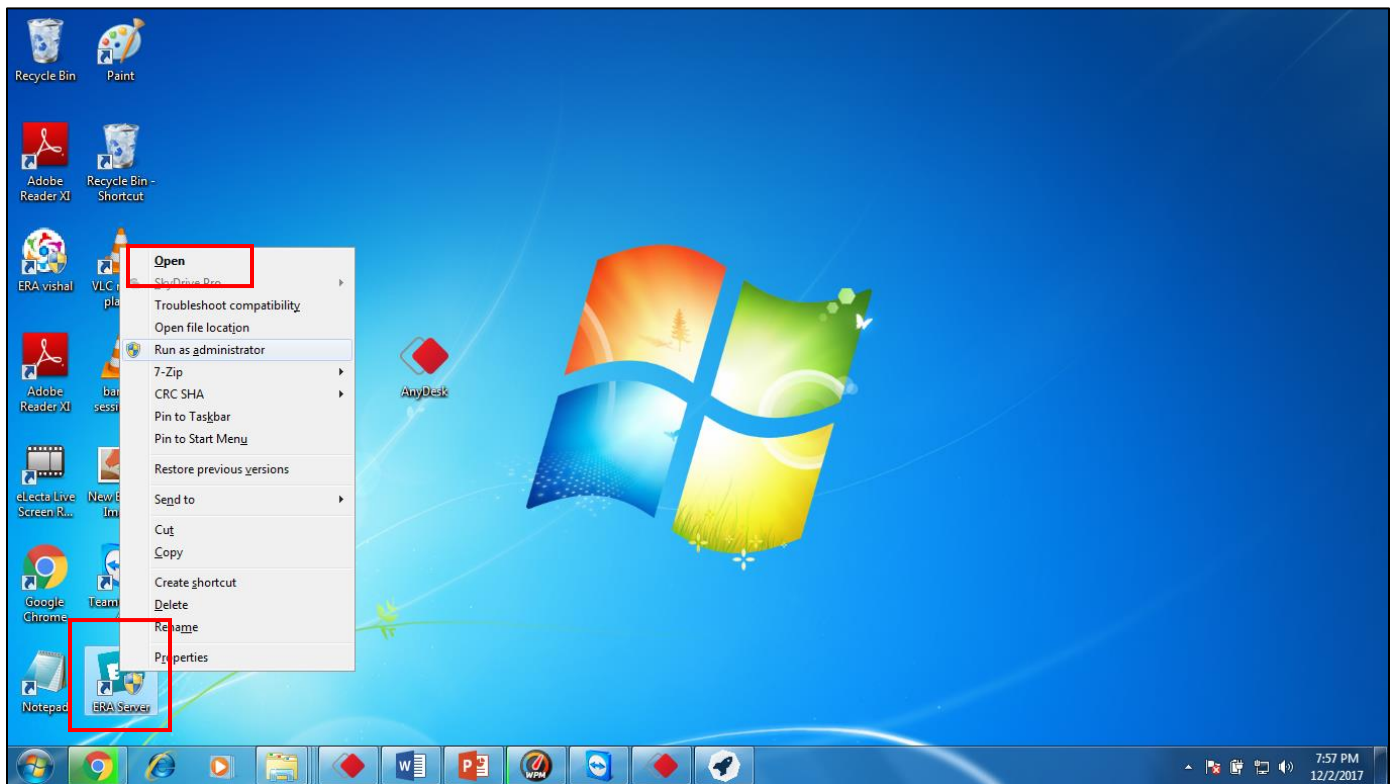


4. Start Installation

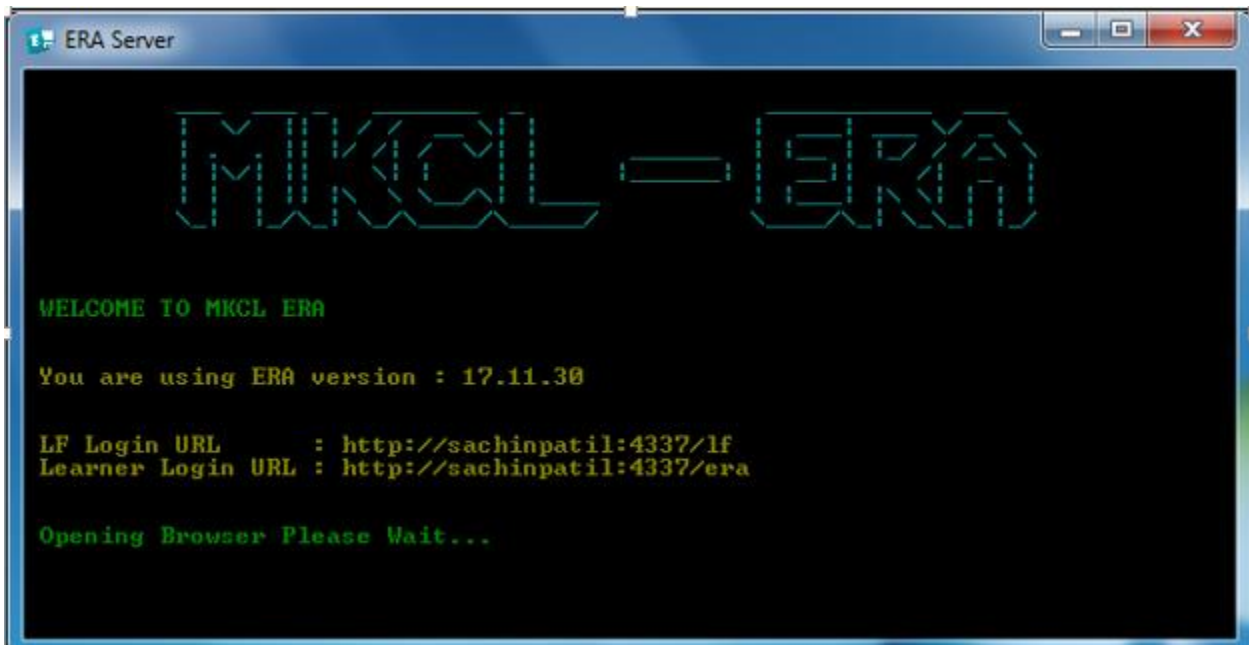




5. Lets start activation - Open ERA Server (Shortcut automatically created at desktop)



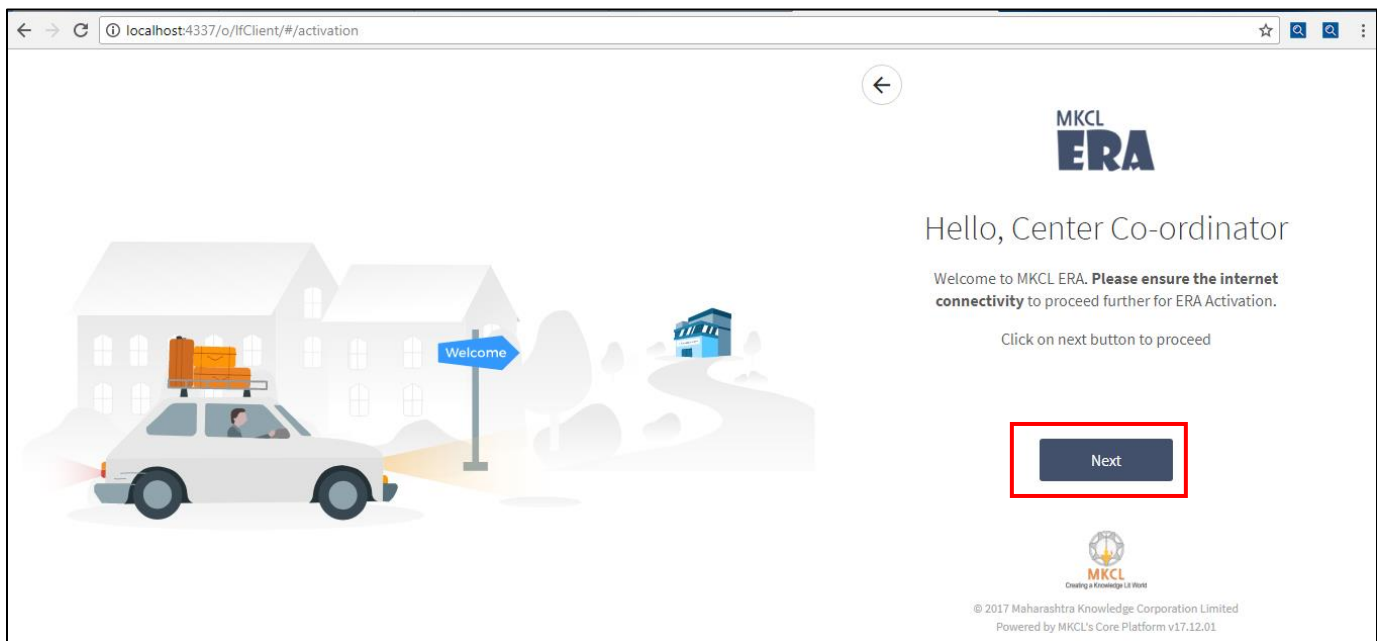
ERA will open automatically



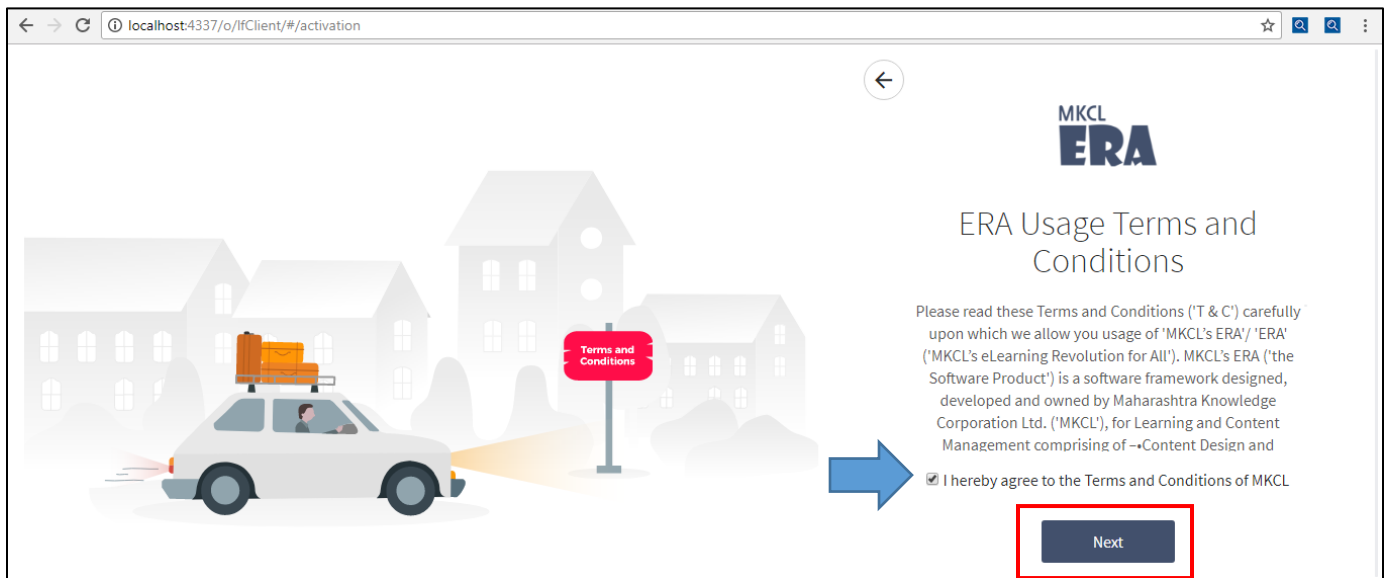
6. Now ERA will get opened in default browser as shown in above image. Ensure that you have to start activation by using google chrome only, so if it is automatically opens in another browser then use the given URL in chrome and proceed for activating ERA : <http://localhost:4337/o/lfclient/#/>



7. Click on “Next” button present on the Welcome screen



8. Read all the ERA Usage Terms and Conditions carefully and accept them by clicking on “Next” button



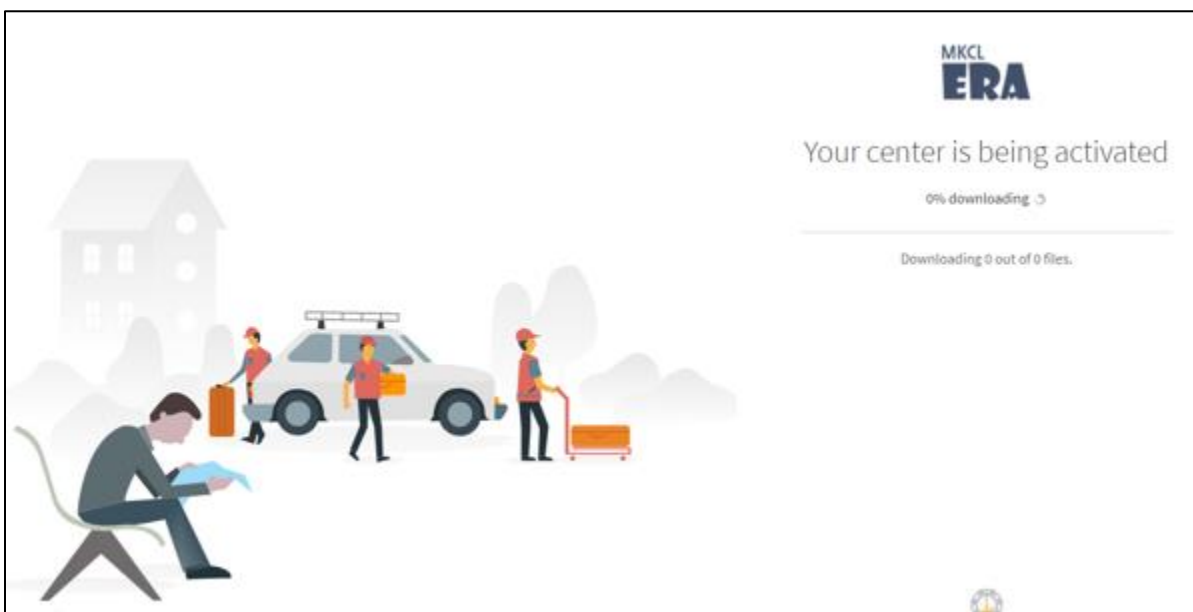
9. Once the Pre-requisite check is done, click on “Next” button



10. Activate your “ERA 2018” using your Centre Code & Password



11. Kindly wait till the center gets activated. ERA will restart after the activation process

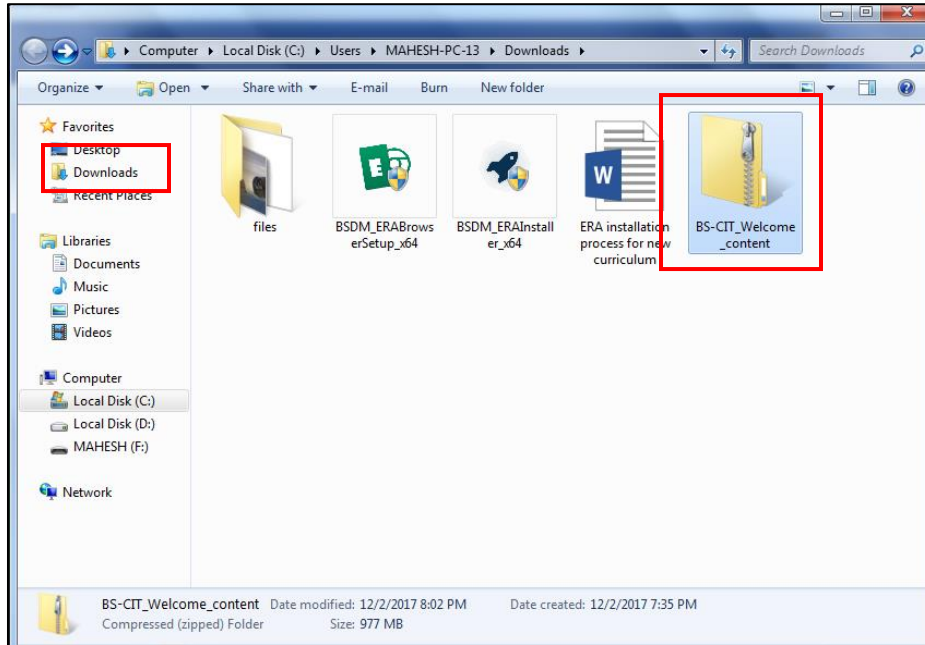


ERA Activation Completed

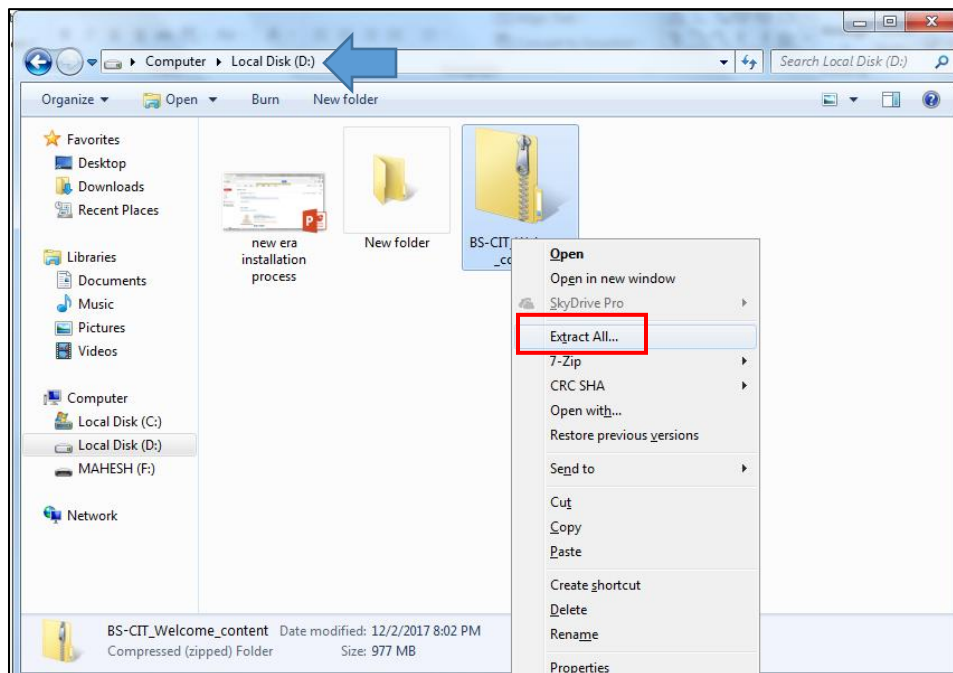
Downloading the Content and Set the path for Content –

A. Download Content

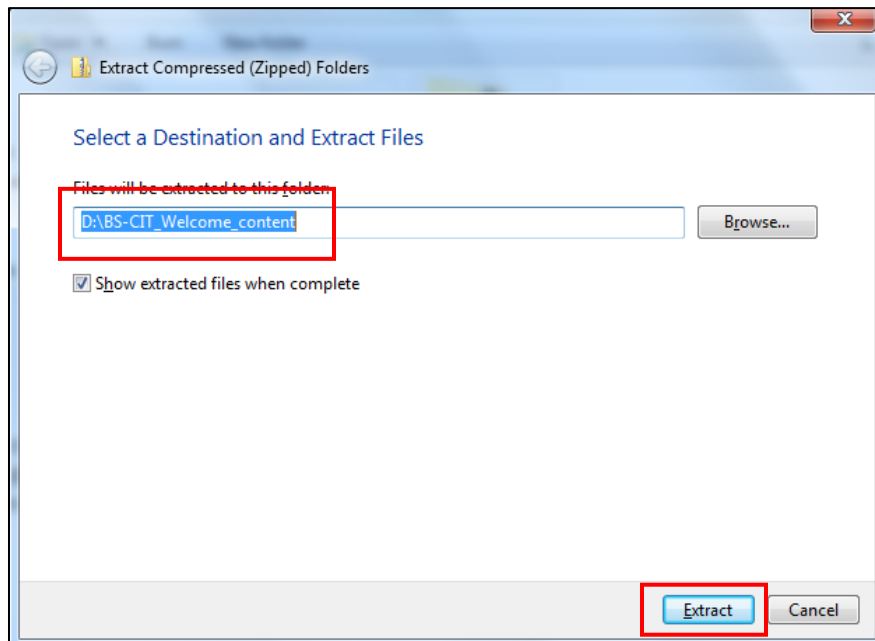
- 1 Download content required for “BSDM welcome course” from below link, http://fileservr.mkcl.org/centerdownload2/BS-CIT_Welcome_content.zip



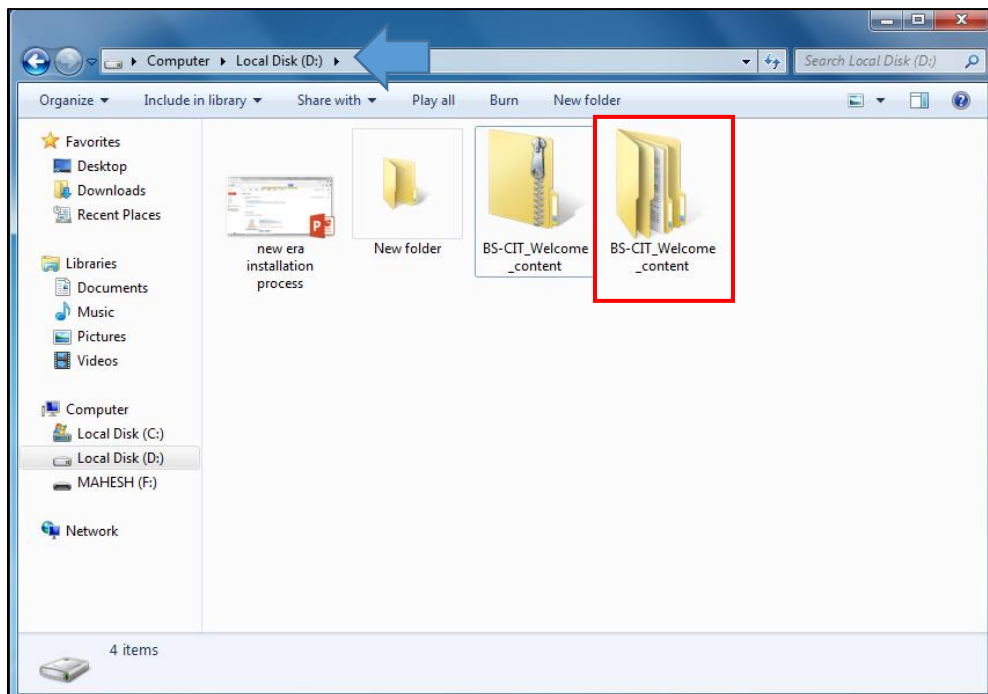
- 2 Copy downloaded zipp file to any drive other than C: and Extract the folder



3 Select the path for extracting folder

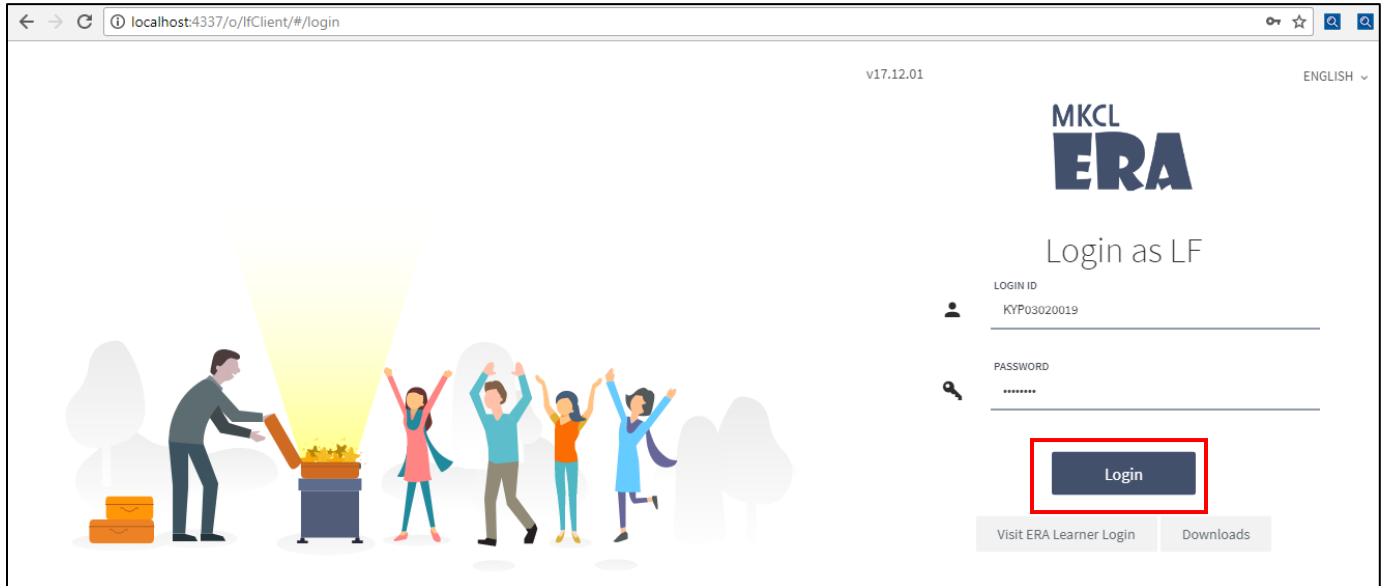


4 Folder will get Unzipped (extracted) successfully

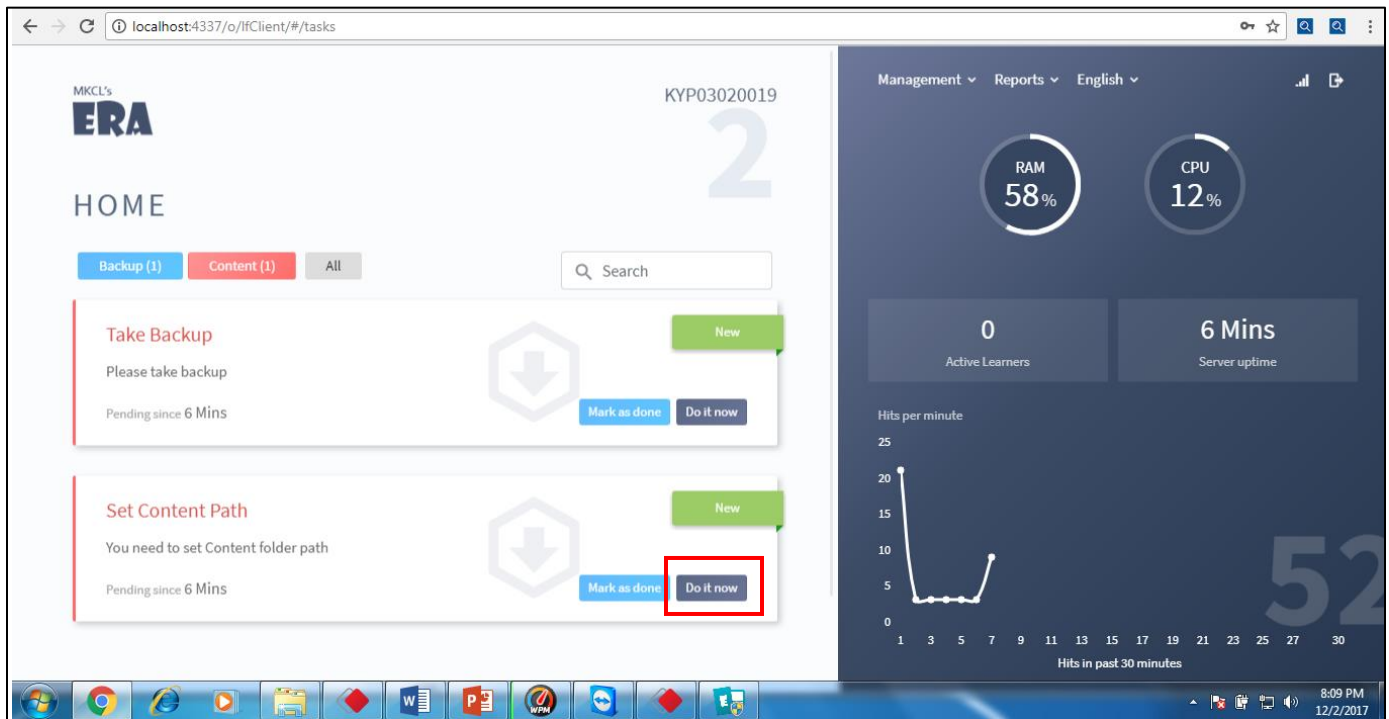


B. Set Path - How to set content path?

- 1 Open Chrome >> Use <http://localhost:4337/o/lfClient/#/login> >> LF login page will appear and use solar login credentials.



- 2 LF Dashboard for ERA will appear : Set content path >> Click on “Do It Now”



- 3 **Set Path** : If you have copied content folder in “D: Drive” Then your content path will be -
“D:\BS-CIT_Welcome_content\content”
Make sure that your content path has the last word as “content”

MKCL's ERA KYP03020019

LOAD CONTENT

Please Set the Content Path

Your drive details:

D:\BS-CIT_Welcome_content\content

Set Path Cancel

D: is suggested drive for content

Content path change confirmation !

ERA Server Application will restart.
Do you wish to continue ?

Yes, Change path Cancel

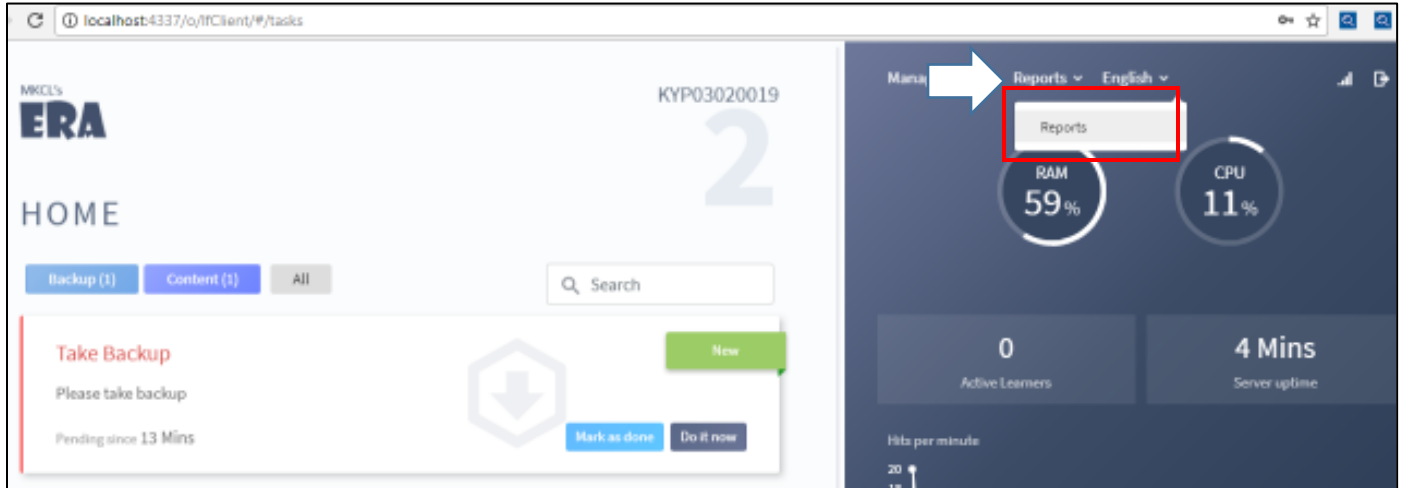
MKCL Folder path successfully changed

ERA Server Application will restart in 11 Seconds

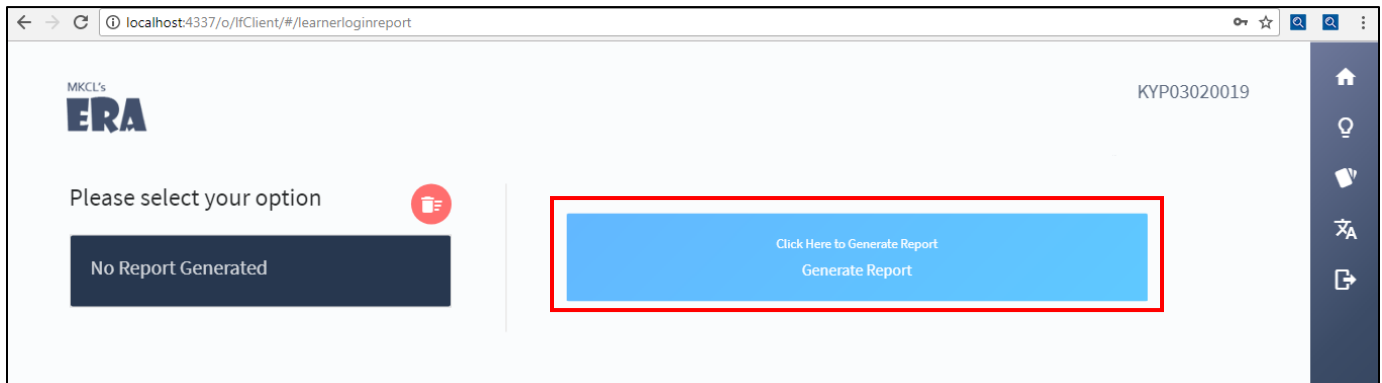
Learning Centre

To view Learner Details/Login Credentials for accessing ERA

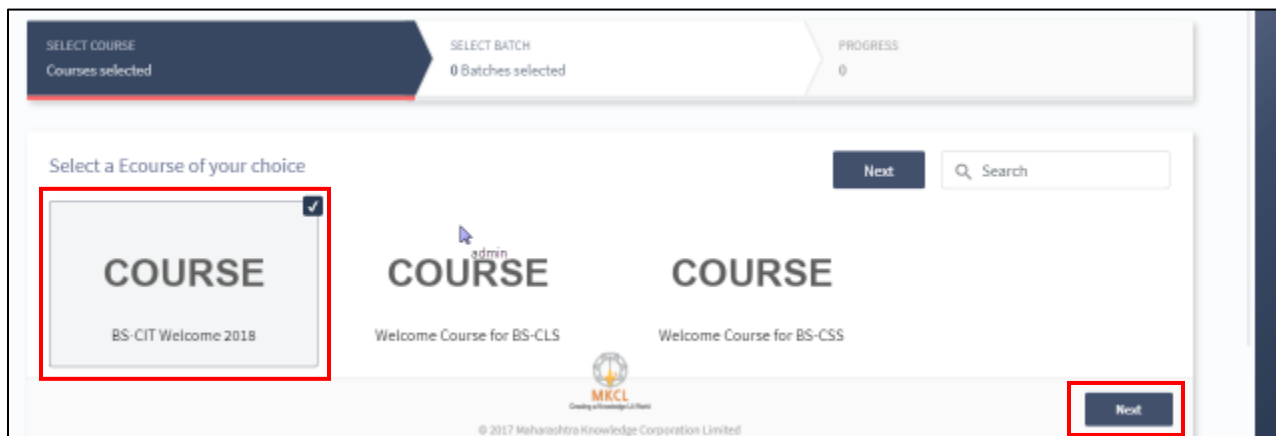
- 1 Open Chrome >> Use <http://localhost:4337/o/lfClient/#/login> >> LF login page will appear and use solar login credentials.



- 2 Click on “Generate Report”



- 3 Select Course “BS-CIT Welcome 2018”



4 Select Batch

MRCL'S ERA KYP03020019

BACK

SELECT COURSE Courses selected

SELECT BATCH 1 Batches selected

PROGRESS 0

Select a batch of your choice

BS-CIT Welcome 2017

Previous Generate report

5 Dashboard of “Learner Report” – Use learner Username for learning ERA (Username and Password will be same for accessing ERA)

Report

Back Recalculate Download Excel Refresh Search

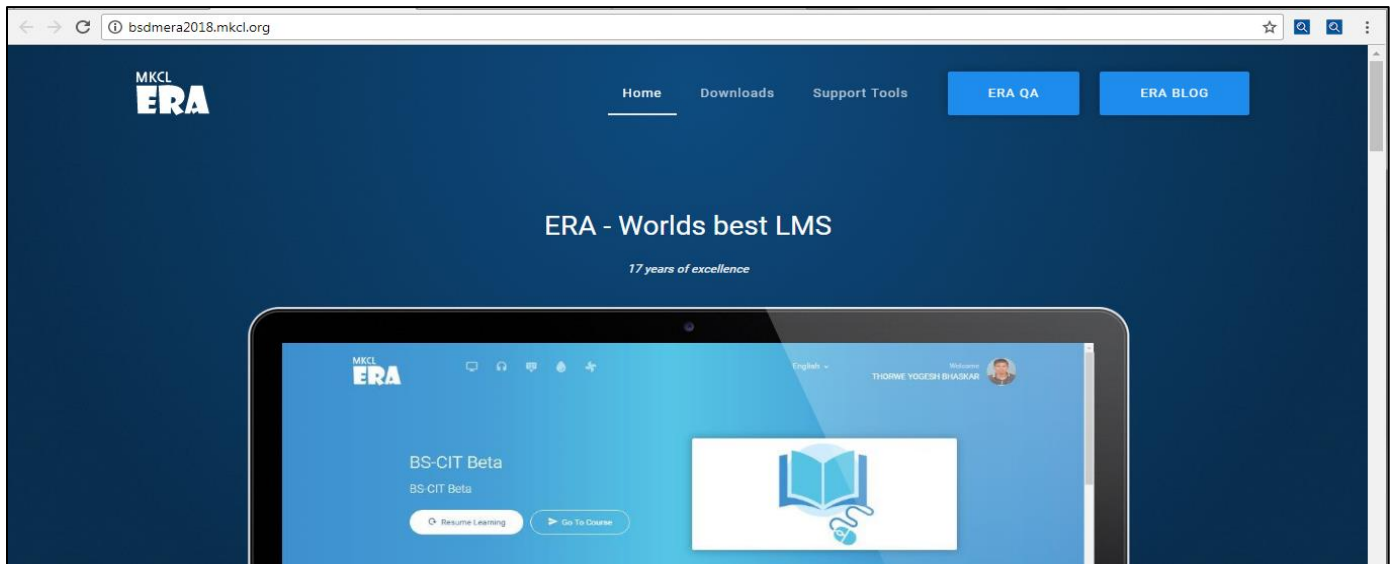
BS-CIT Welcome 2018 > BS-CIT Welcome 2018 > BS-CIT Welcome 2017

Name	MANGESH PRAKASH GAMARE	Login ID	mangeshprakashgamare.d84	Learner code	2514587617052852
Time Spent	00:00:00	Percentage	0%	Session Completion	0
		Challenges Solved	0	Learning end date	31st Dec, 2017
Name	NITU KUMARI	Login ID	nitukumari.e96	Learner code	2514603617052852
Time Spent	00:00:00	Percentage	0%	Session Completion	0
		Challenges Solved	0	Learning end date	31st Dec, 2017

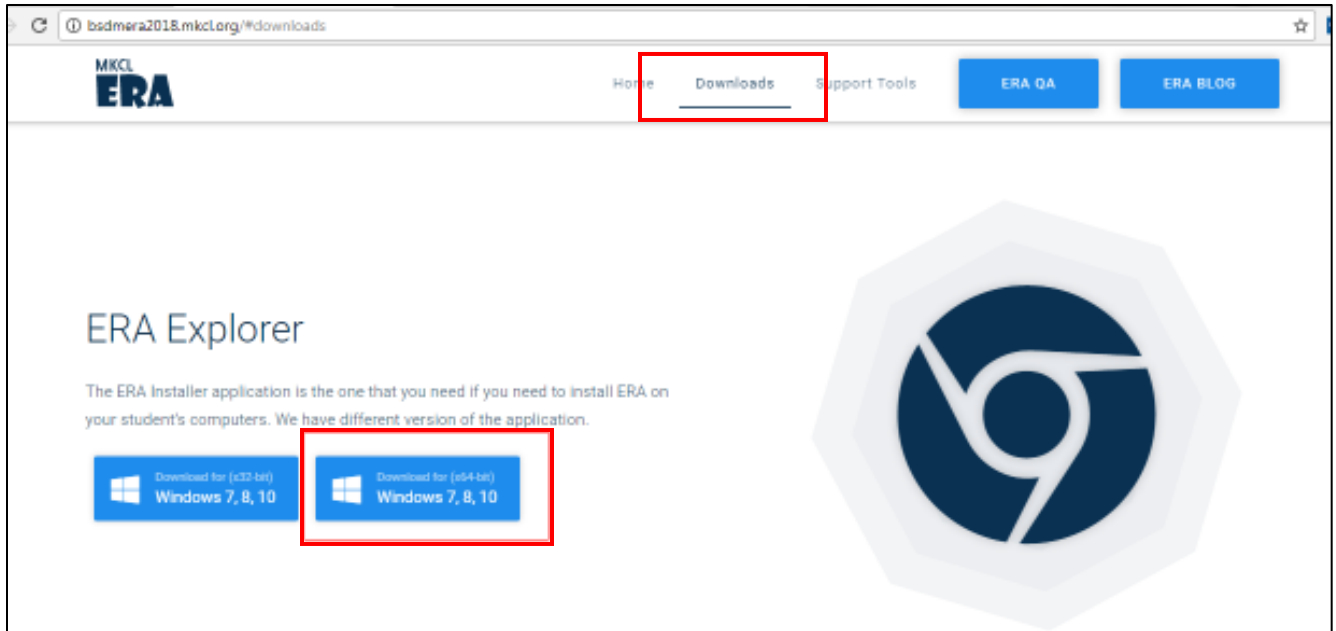
MRCL Quality of Knowledge is Real

Steps to install new ERA Explorer: (Let's Start with learning by using ERA Explorer)

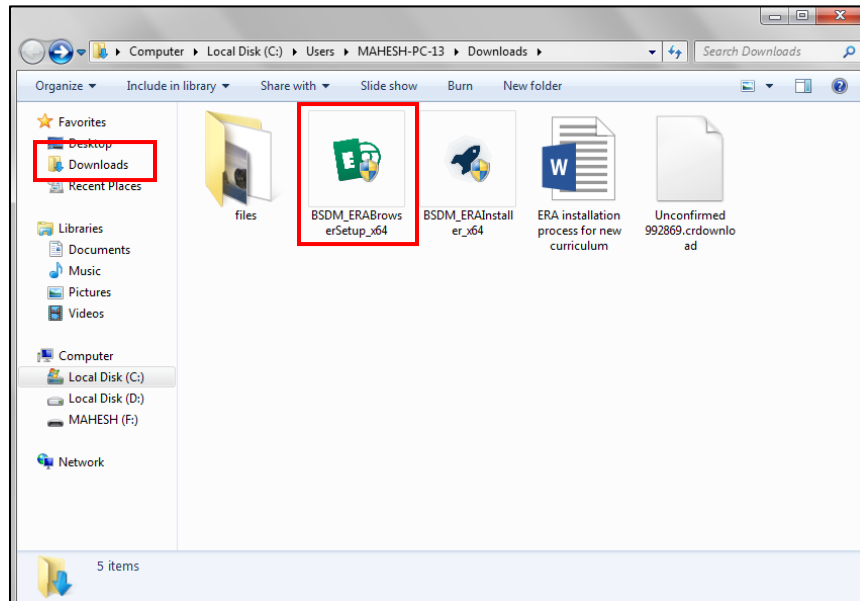
1. Open Chrome and use the given URL for downloading ERA Explorer - <http://bsdmera2018.mkcl.org/>



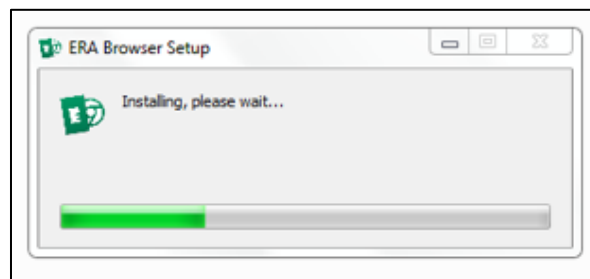
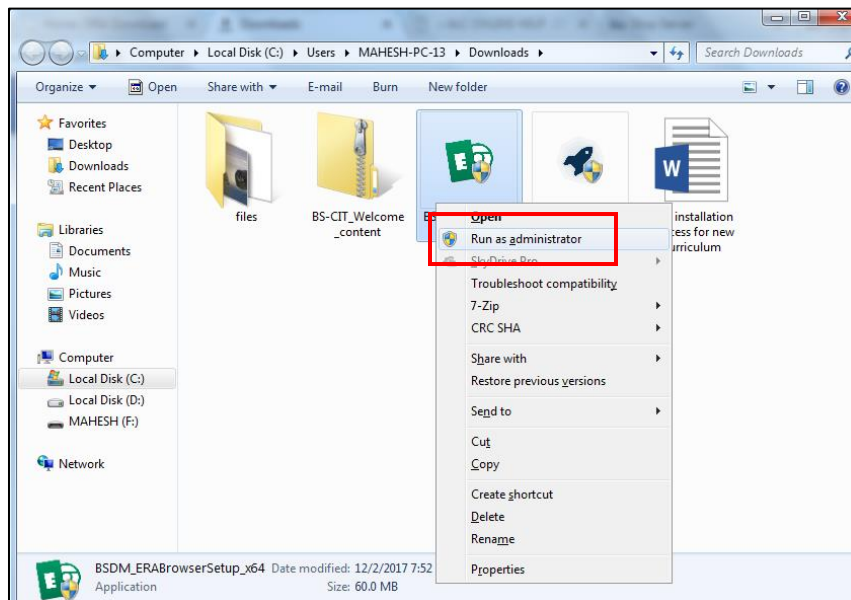
2. Go-to Downloads tab and select ERA Explorer for 64-bit



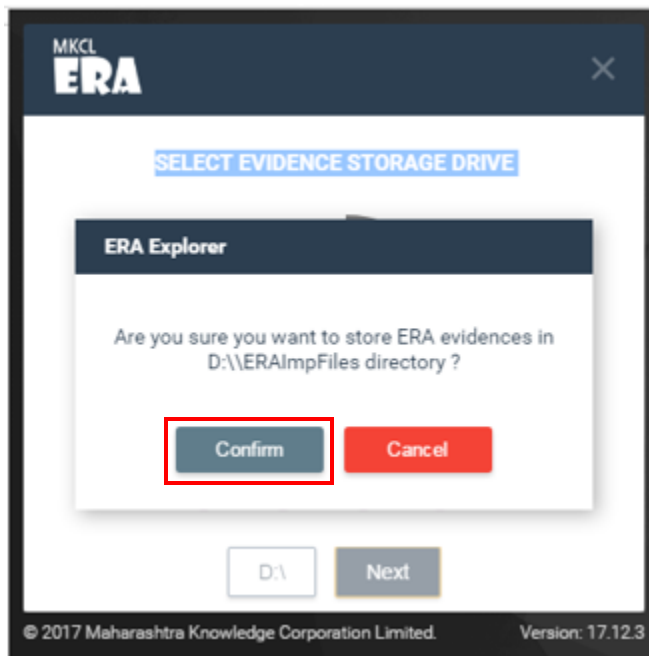
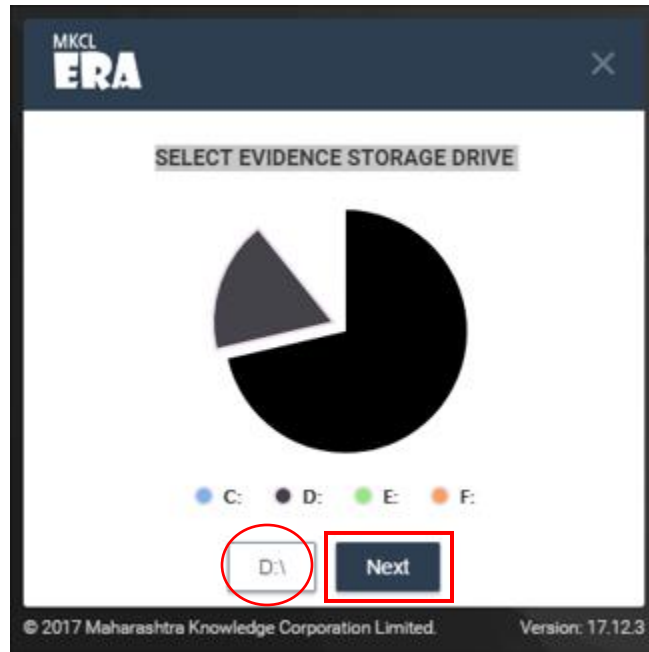
3 Go to Downloads >> Intsall “ERA Browser” setup



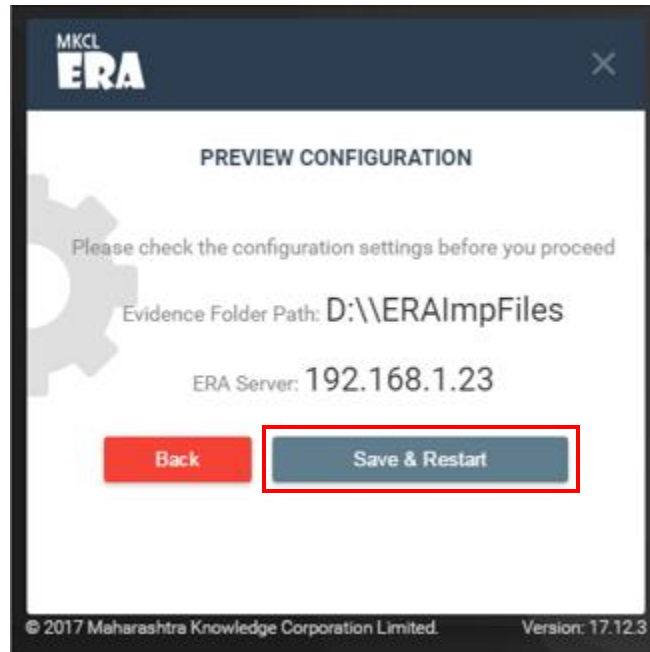
4 Start Installation



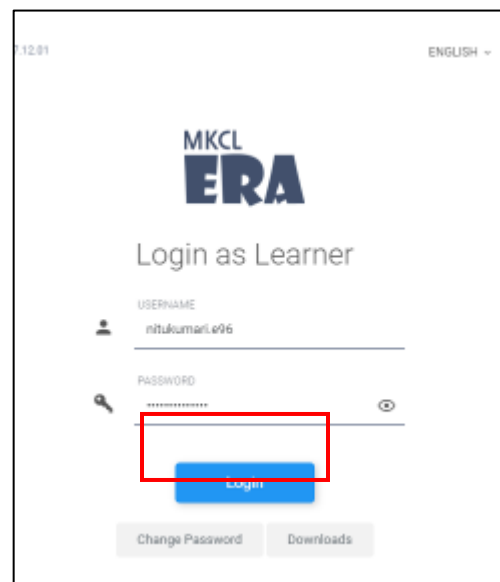
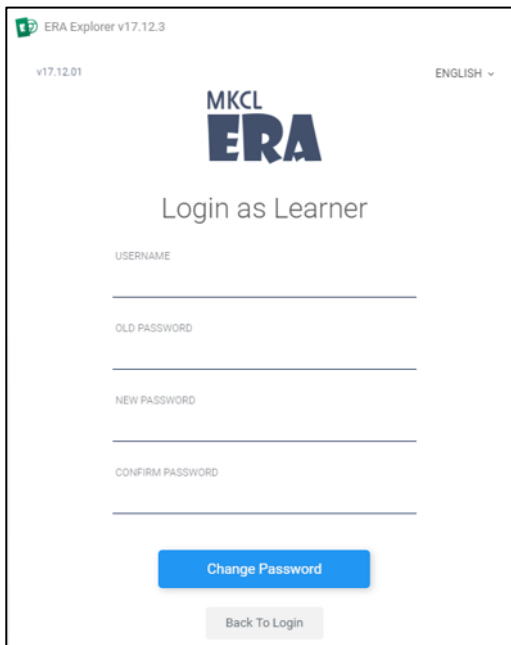
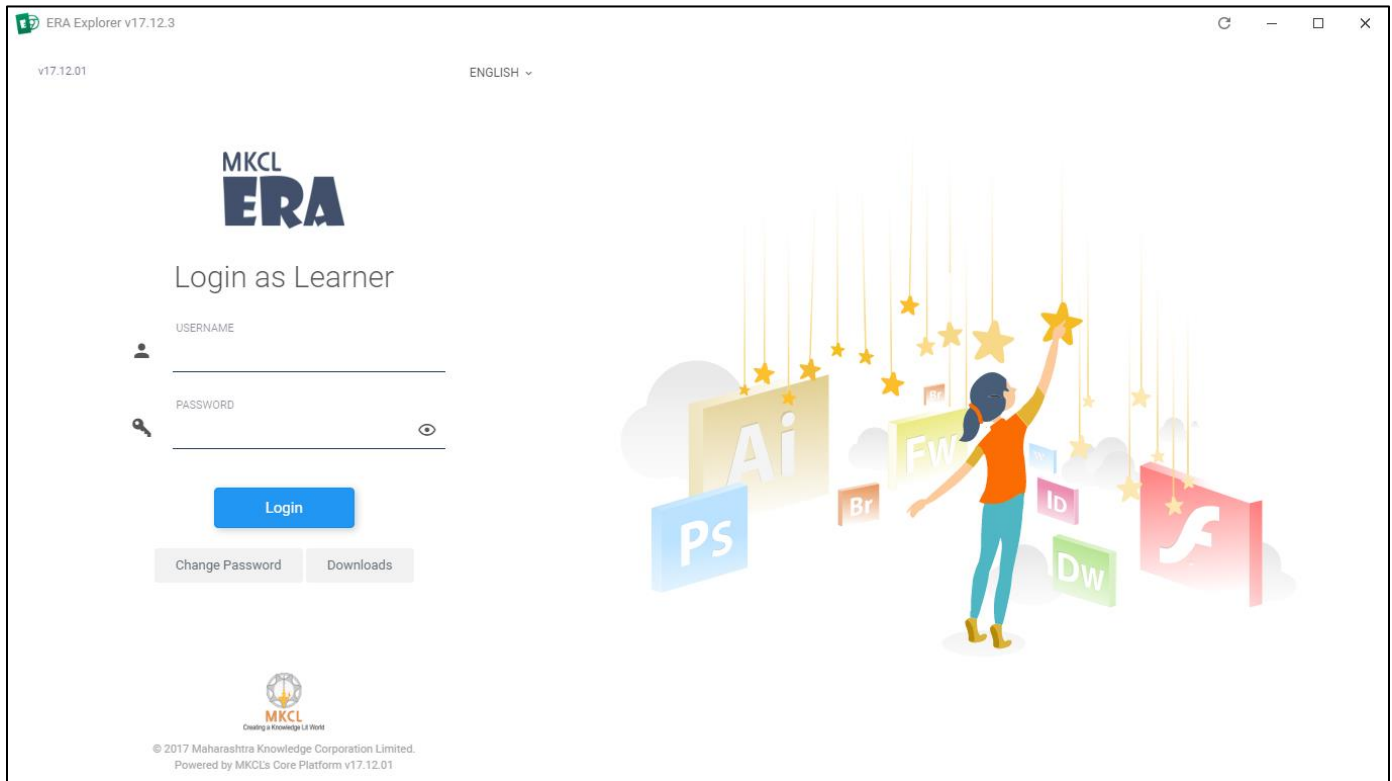
5 Select Drive for evidence generation (Select other than C:)



6 Map IP address : it will identify automatically >> Save and Restart

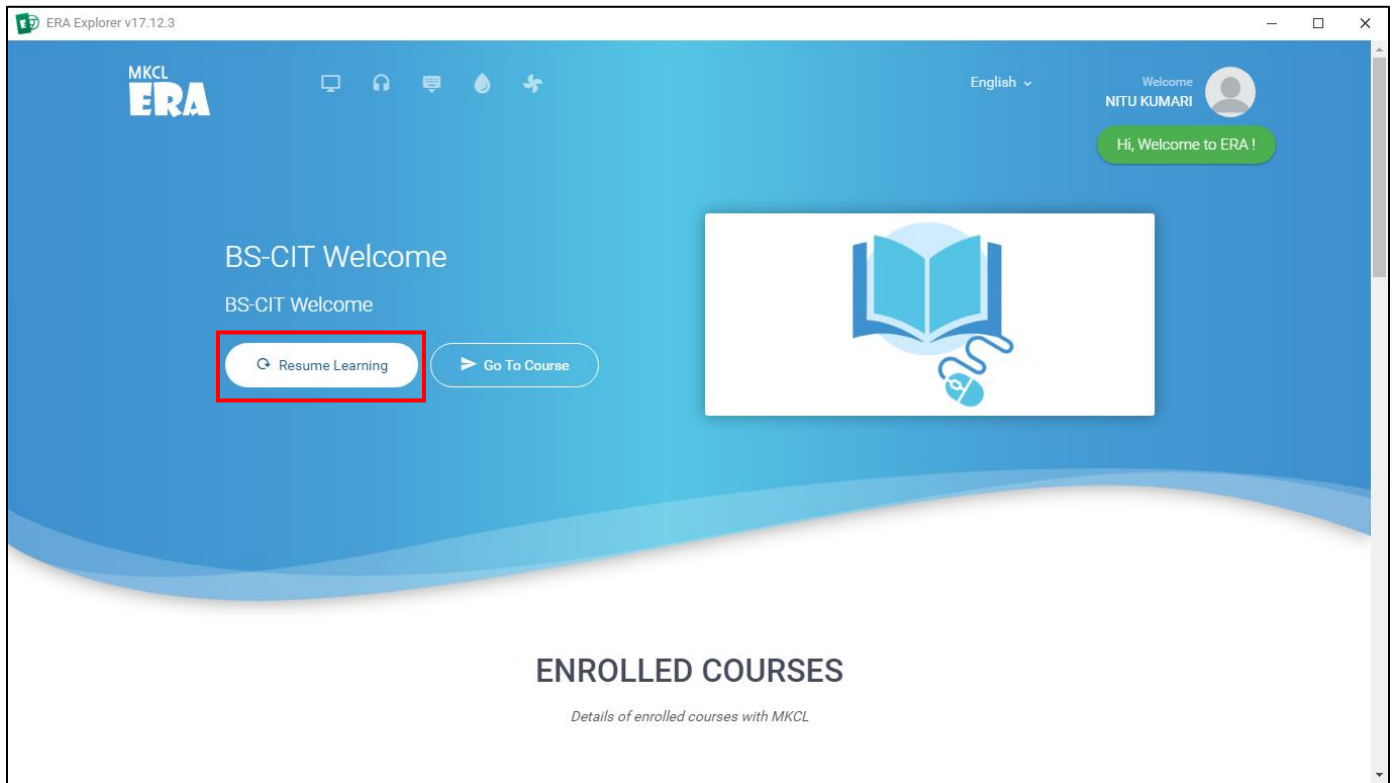


7 **Learner Login** : User learner login already copied from LF login –Repos tab. Id and password will be same, you have to reset after first login



Note: - If you are unable to Login ERA Explorer then you can use below path to identify the ERA Explorer application located at [C:\Program Files\ERA Browser\ERA_Browser_launcher \"Application\"](C:\Program Files\ERA Browser\ERA_Browser_launcher \) and copy same on desktop.

8 Learner Dashboard : You can view CIT course only >> Select “Go To Course”



Highlights of current session and Mark/Session Completion Report –

ERA Explorer v17.12.3

Session #01

Highlights

- » Course Introduction
- » Mouse Games
- » Classroom Period
- » Classroom Period
- » Lab Period
- » Lab Period

RESUME SESSION

Internal Marks
0 / 80

Sessions Completed Count
0 / 5

9 Start learning CIT

ERA Explorer v17.12.3

BS-CIT Welcome 2018

Search here... English

Session #01

- Course Introduction
- Mouse Games
- Classroom Period
- Lab Period

Session #02

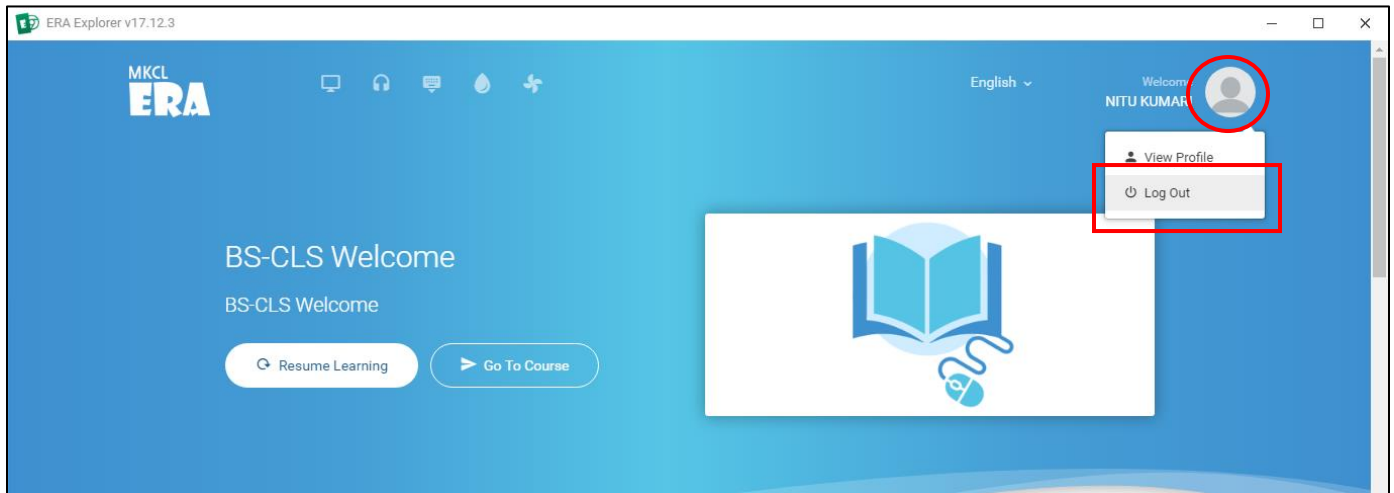
Session #03

Session #04

Session #05

A- | A | A+

10 How to Log Out ERA Browser – Click at home button, you will directed to home screen >> Click on Learner photo to view Log Out option



Goodbye and Comeback soon

MKCL
ERA

You have Successfully Logged
Out

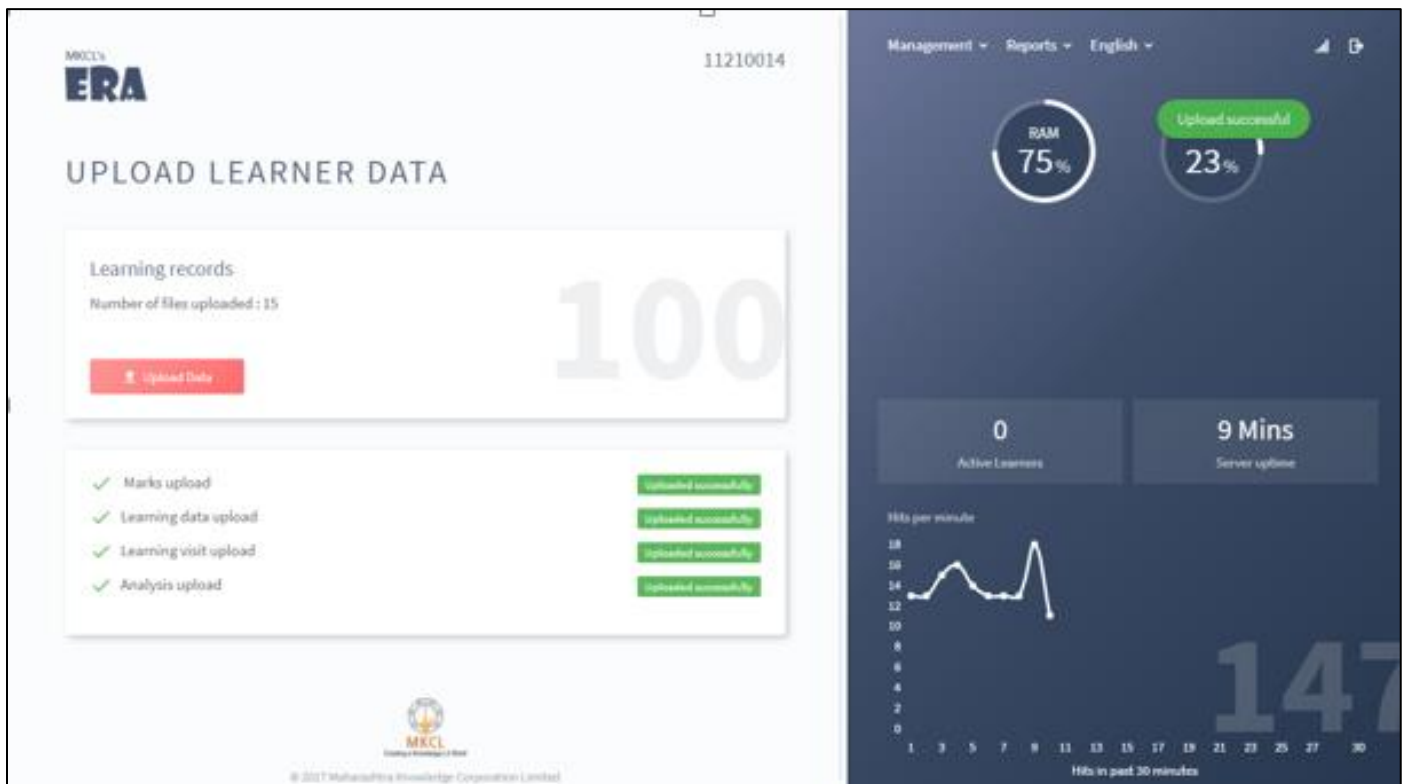
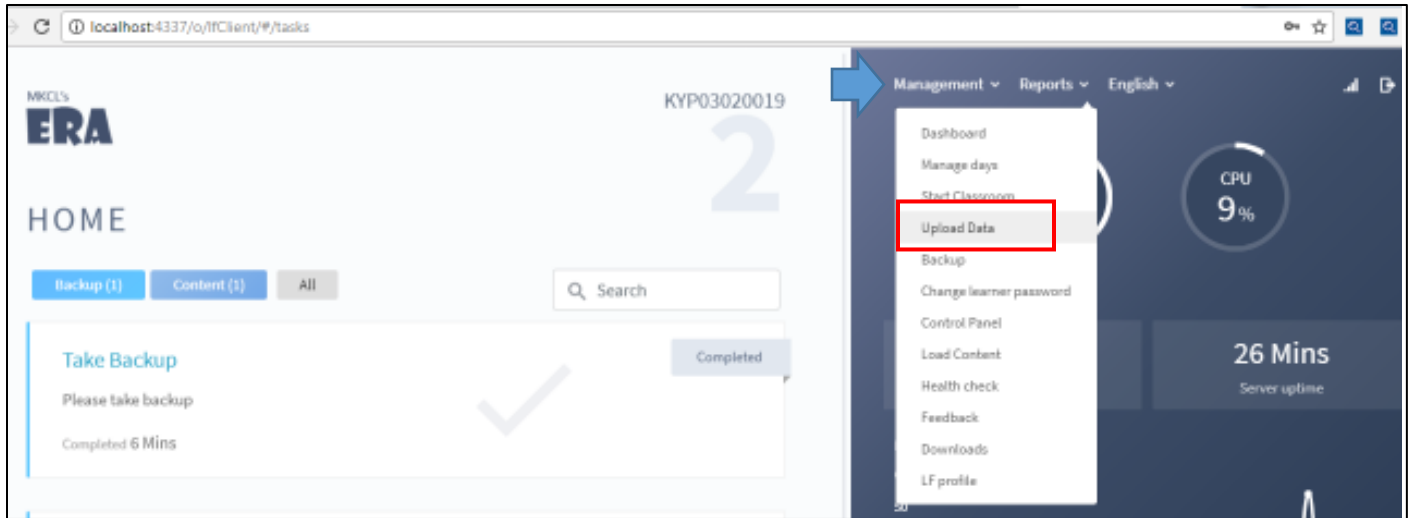
Back To Login



© 2017 Maharashtra Knowledge Corporation Limited

Upload Data

- 1 Open Chrome >> Use <http://localhost:4337/o/lfClient/#/login> >> LF login page will appear and use solar login credentials
- 2 Select Management >> Click on "Upload Data"



Welcome to the world of ERA 😊